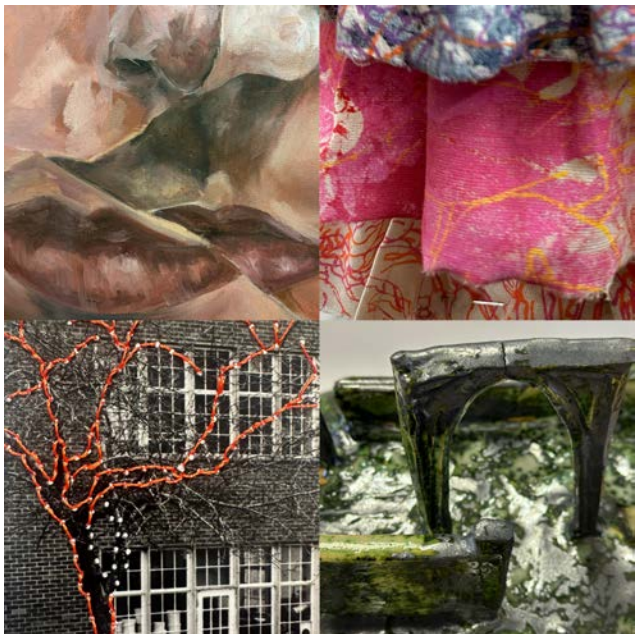


PERSPECTIVES

Lower Sixth Mid-Year Exhibition

7 - 20 March 2024



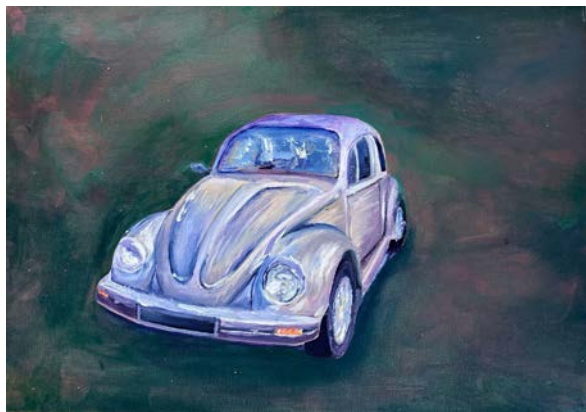
This term we showcase work from the Lower Sixth, who recently exhibited their work in the department.

This exhibition features works created through experimentation and development, produced in workshops and dedicated project time across our studios areas of printmaking, painting, sculpture, and photography.

James Nairne
Director of Art



Work by Belle Willoughby, Hattie Galister, Annie Burns, Annie Price, Emily Wates, Molly Bertram



Objects by Annabel Burns, Ollie Mannix, Daisy Beaumont, Jemima Frost, Molly Squier, Mia Prideaux, Henry Porter, Bella Carr, Darcey Moulton.



Annabel Burns



Molly Squier

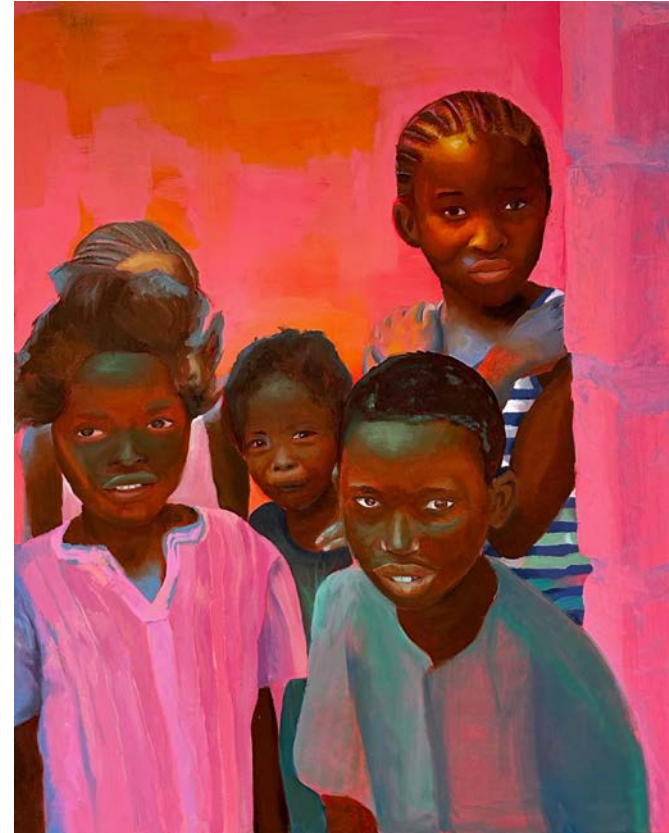


*Portraits by Tara Heming,
Darcey Moulton, Paige
Cartledge, Molly Bertram*



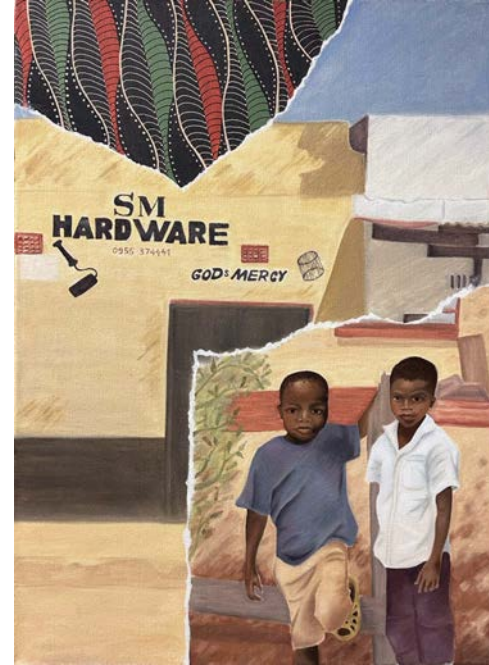


Daisy Beaumont



Codi von Greyerz Beck







Fenella Waller



LVI - Printmaking



Annie Price





Daisy Beaumont



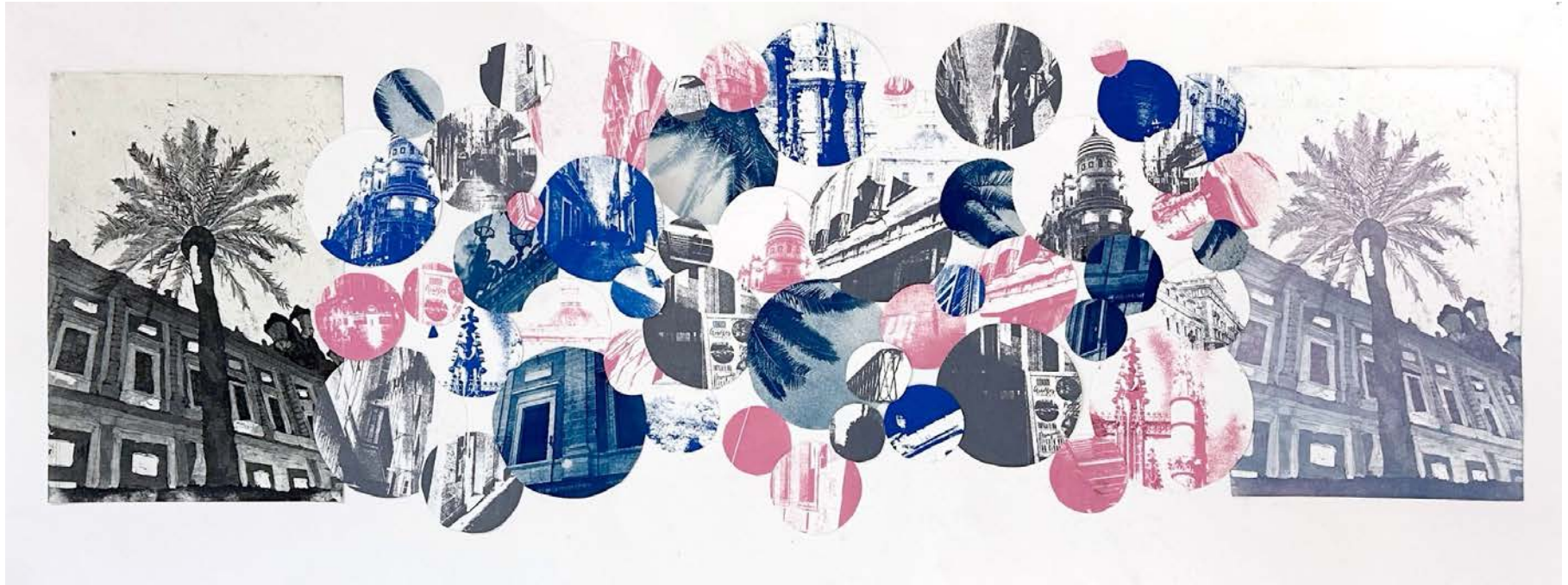
Tara Heming



Tara Heming



Fenella Waller, Jemima Frost, Tara Heming



Tumbling Architecture by Belle Willoughby





Annie Burns



Circles - Hattie Glaister, Ollie Mannix.



Collage in Print - Maisy Brewer, Izzy Powell, Mia Prideaux,

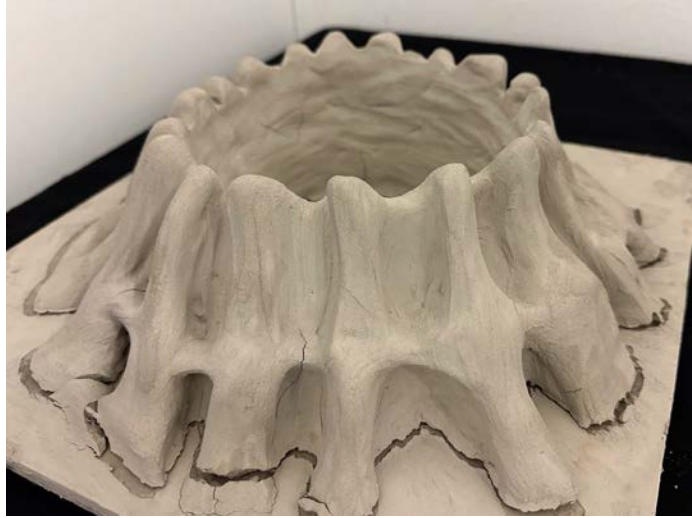


Tabby Rayer, Bella Carr, Henry Porter.



Mia Prideaux, Darcey Moulton





Henry Porter



Hattie Glaister



Maisey Brewer



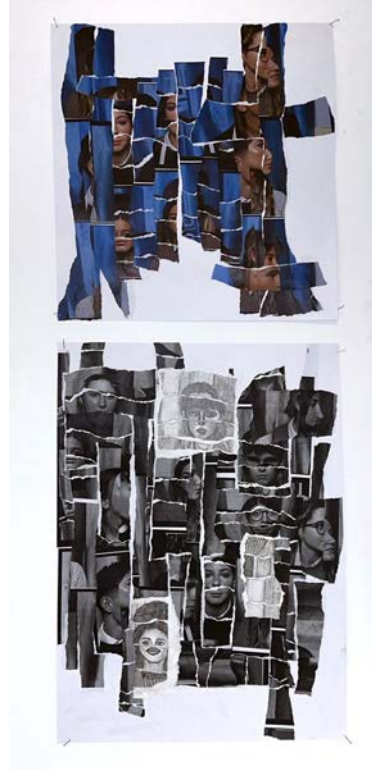
Paige Cartledge, Daisy Beaumont



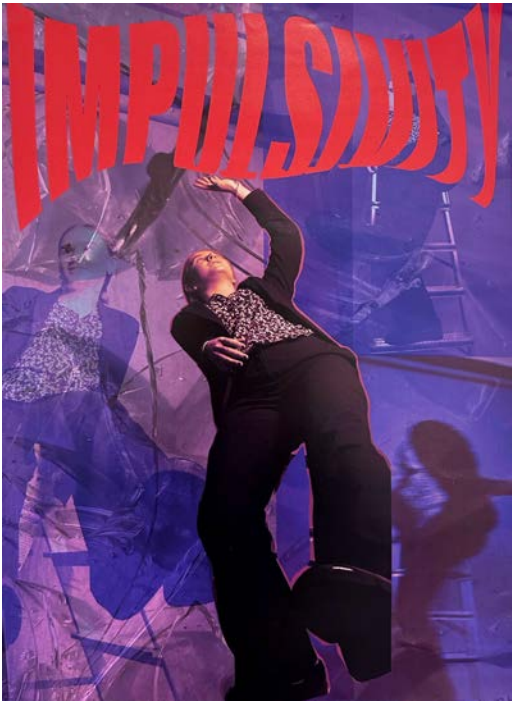
Jemima Frost



Maisy Brewer



Annie Price



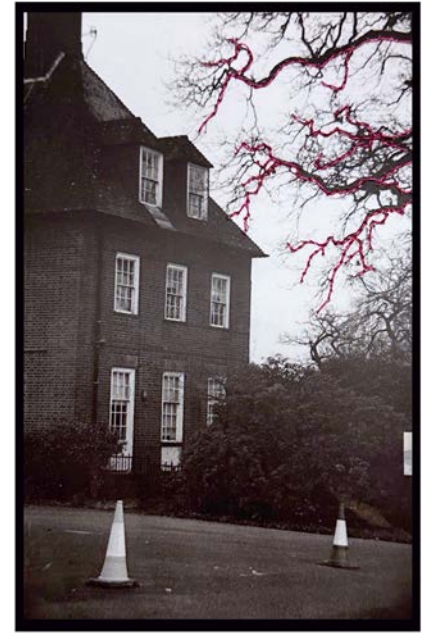


Mia Prideaux



LVI - Photography

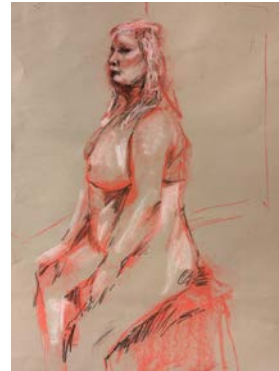
Fenella Waller



Izzy Powell



Work by Ollie Mannix, Tabby Rayer,



Life drawing by Tara Heming, Daisy Beaumont, Molly Bertram, Maisy Brewer, Izzy Powell, Darcy Moulton, Paige Cartledge, Molly Squier,

